

Barrel®

ULTRA LIGHT &
FLEXIBLE SOLAR PANEL

375 Watt 72 Cell Monocrystalline Module

POWER OUTPUT RANGE 370-375 W

POWER TOLERANCE 0-5 W

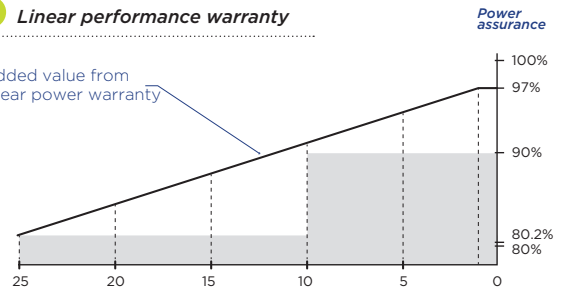
Warranties:

10
YEARS
PRODUCT

25
YEARS
LINEAR
POWER

Linear performance warranty

Added value from
linear power warranty



Ultra-light

Glass free module weighs 5.8 kg, 70% lighter than conventional glass modules.



Aesthetic

Seamless integration with underlying installation surface.



Fast-Installation

Through "Quick-Bonding" installation, requires no penetration, reduces time on roof by 40% and eliminates the use of mounting hardware.



Durable

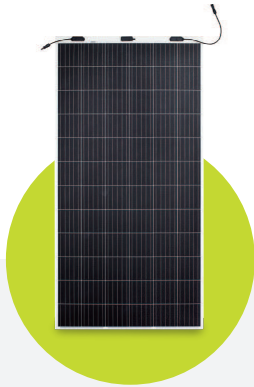
The PV panel is the first glassless module to pass the same durability tests as conventional glass modules, including IEC 61215:2016, IEC61730:2016 and UL 1703 (USA). It has also passed PIO, salt mist and ammonia corrosion tests.



CAUTION: read installation manual before using the product.

2023 // Barrel™ All rights reserved. Specifications included in this datasheet are subject to change without notice

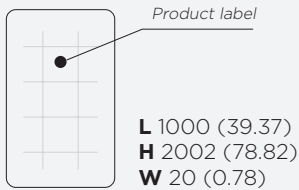
2023 // Barrel™ All rights reserved - Barrel S.r.l - Via Giorgio Giulini 2 - 20123 Milano (MI) Italy - VAT IT12616620964



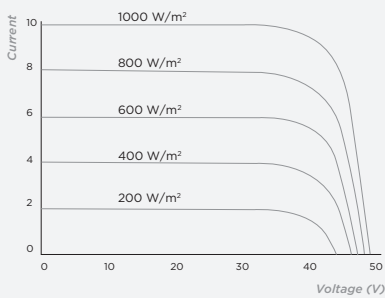
ULTRA LIGHT &
FLEXIBLE SOLAR PANEL

375 Watt
72 Cell Monocrystalline Module

Dimensions



I-V Curve (375)



Temperature characteristics

Nominal Module Operating Temperature (NOMT)	41±2°C
Temperature Coefficient of P_{max}	-0.38 %/°C
Temperature Coefficient of V_{oc}	-0.28 %/°C
Temperature Coefficient of I_{sc}	0.020 %/°C

Electrical characteristics

STC	370	375
Maximum Power (P_{max})	370	375
Maximum Power Voltage (V_{mp})	39.9	40.2
Maximum Power Current (I_{mp})	9.28	9.33
Open-circuit Voltage (V_{oc})	48.4	48.6
Short-circuit Current (I_{sc})	9.81	9.86
Module Efficiency (%)	18.5	18.7
Operating Temperature	-40 °C to 85 °C	
Maximum System Voltage	1000 V DC (IEC)	
Maximum Series Fuse Rating	20 A	
Application Class	Class A	
Power Tolerance	0/+5 W	

STC: Irradiance 1000 W/m², Cell temperature 25 °C, AM=1.5

Tolerances of P_{max} , V_{oc} and I_{sc} are with in ±5%

NMOT	370	375
Maximum Power (P_{max})	278	282
Maximum Power Voltage (V_{mp})	36.8	37.0
Maximum Power Current (I_{mp})	7.56	7.63
Open-circuit Voltage (V_{oc})	45.1	45.3
Short-circuit Current (I_{sc})	8.00	8.07

NMOT: Irradiance 1000 W/m², Ambient temperature 20 °C, AM=1.5, Wind speed 1 m/s.

Mechanical characteristics

Solar Cell	Monocrystalline silicon (158.75mm)
N° Cells	72 (6x12)
Module Dimensions	2002x1000x20 mm
Weight	5.8kg
Backsheet	White
Frame	Frameless
J-box	IP 68 rated
Output Cables	Photovoltaic technology cable 4.0 mm 2, (+)150 / (-)450 mm
Connector	MC4 compatible

Packaging configuration

	20'GP	40' HC
Module per pallet	30+66	66
Pieces per container	480	1452